

Stevens Creek Project Relicensing

FEDERAL AGENCY OUTREACH MEETING

MARCH 2019



Meeting Agenda

- ▶ Introductions
- ▶ Relicensing Goals and Agency Goals
- ▶ Project Overview
- ▶ Relicensing Process and Timeline
- ▶ Review Environmental Resource Areas and Potential Issues
- ▶ Discuss Relicensing Working Groups and Agency Personnel Interest and Involvement

SCE&G Relicensing Goals

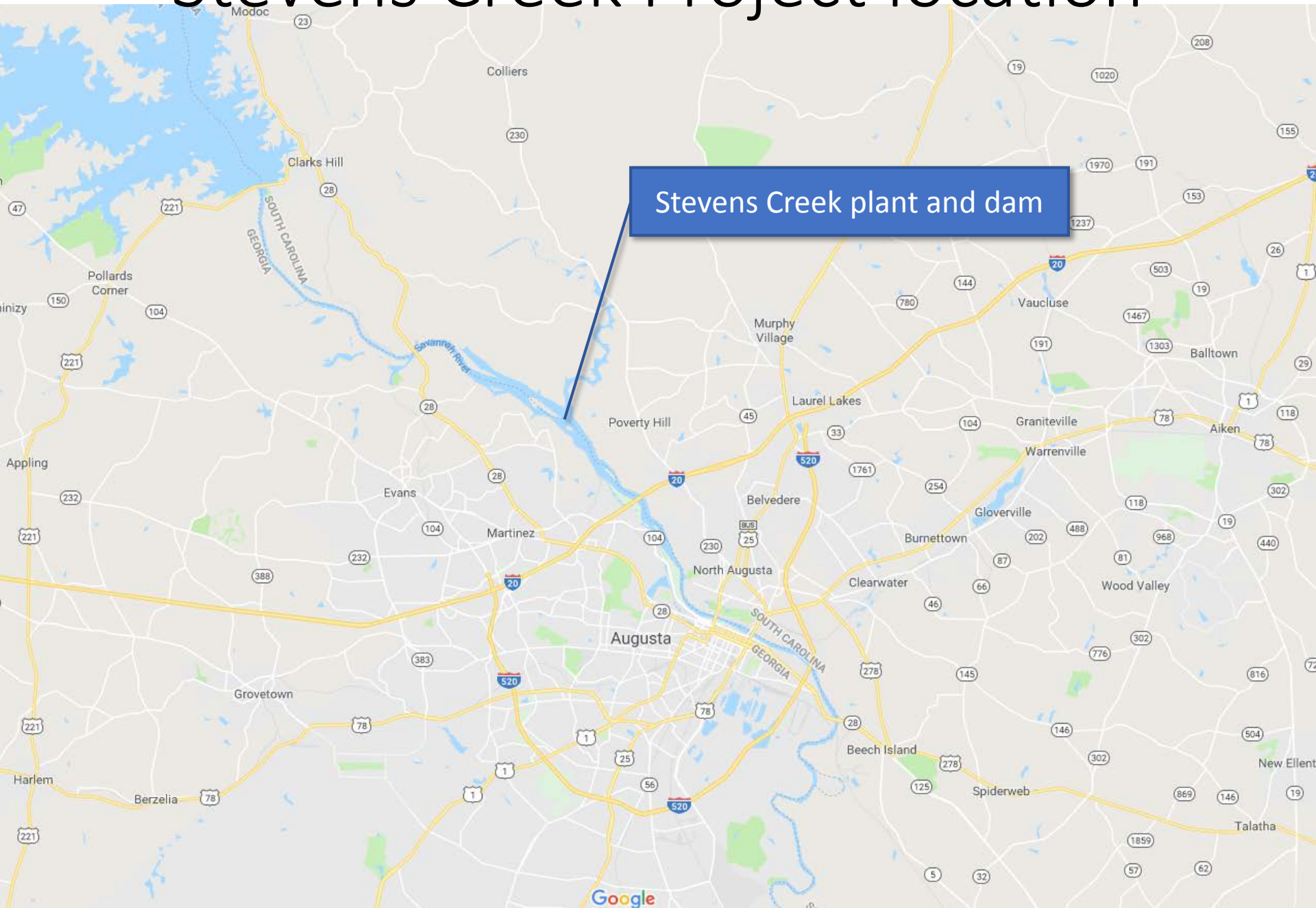
- ▶ Enhanced agency and stakeholder engagement through use of the TLP
- ▶ Establish and/or enhance positive working relationships with resource agencies and NGOs
- ▶ Develop licensing documents that satisfy regulatory requirements and hold up to FERC scrutiny
- ▶ Progression towards a Comprehensive Relicensing Settlement Agreement (CRSA)
- ▶ Retain operational flexibility in order to re-regulate USACE flows

Stevens Creek Hydroelectric Project

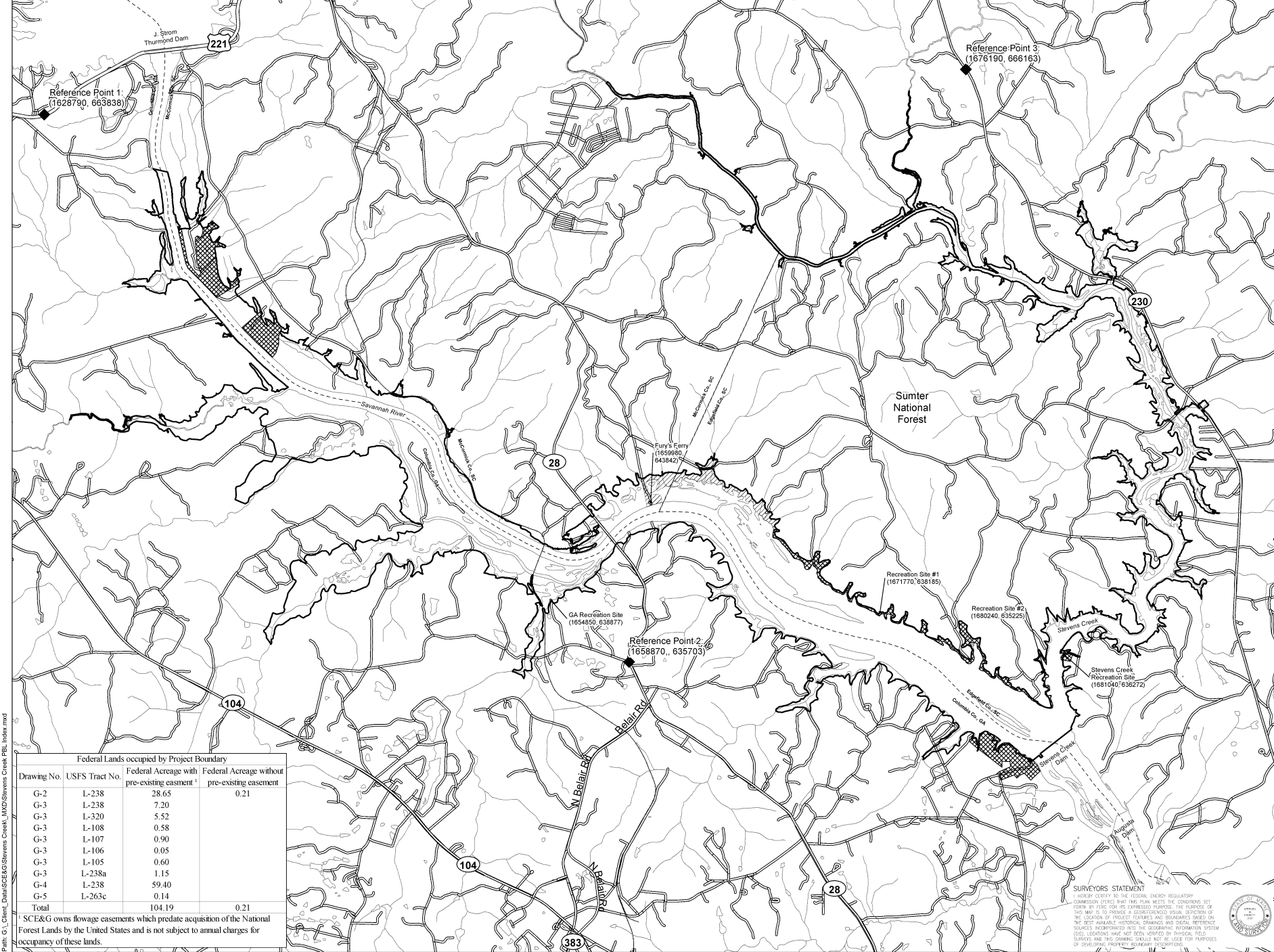
FERC Project No. 2535 – GA,SC



Stevens Creek Project location







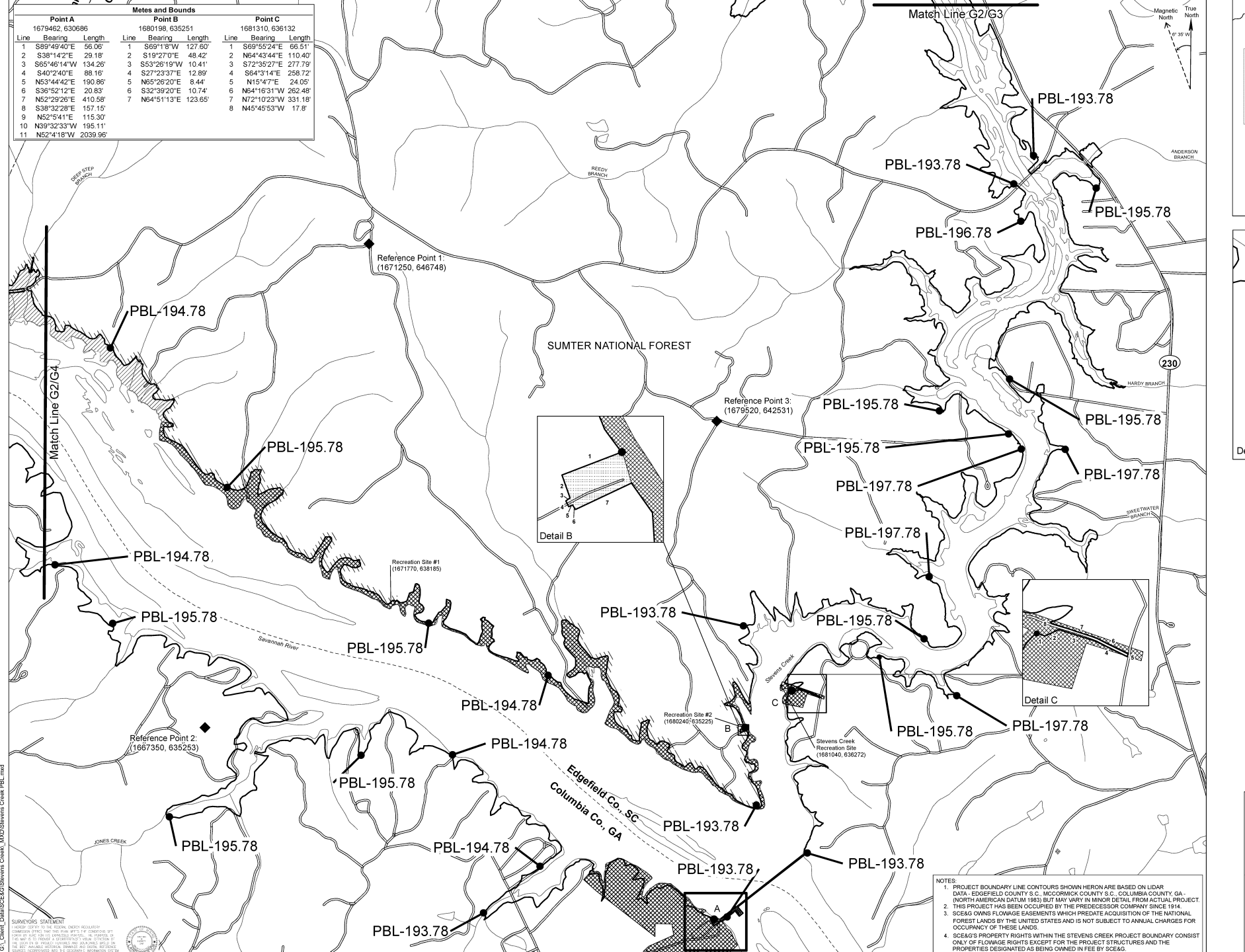
Federal Lands occupied by Project Boundary			
Drawing No.	USFS Tract No.	Federal Acreage with pre-existing easment ¹	Federal Acreage without pre-existing easment
G-2	L-238	28.65	0.21
G-3	L-238	7.20	
G-3	L-320	5.52	
G-3	L-108	0.58	
G-3	L-107	0.90	
G-3	L-106	0.05	
G-3	L-105	0.60	
G-3	L-238a	1.15	
G-4	L-238	59.40	
G-5	L-263c	0.14	
Total		104.19	0.21

¹ SCE&G owns flowage easements which predate acquisition of the National Forest Lands by the United States and is not subject to annual charges for occupancy of these lands.

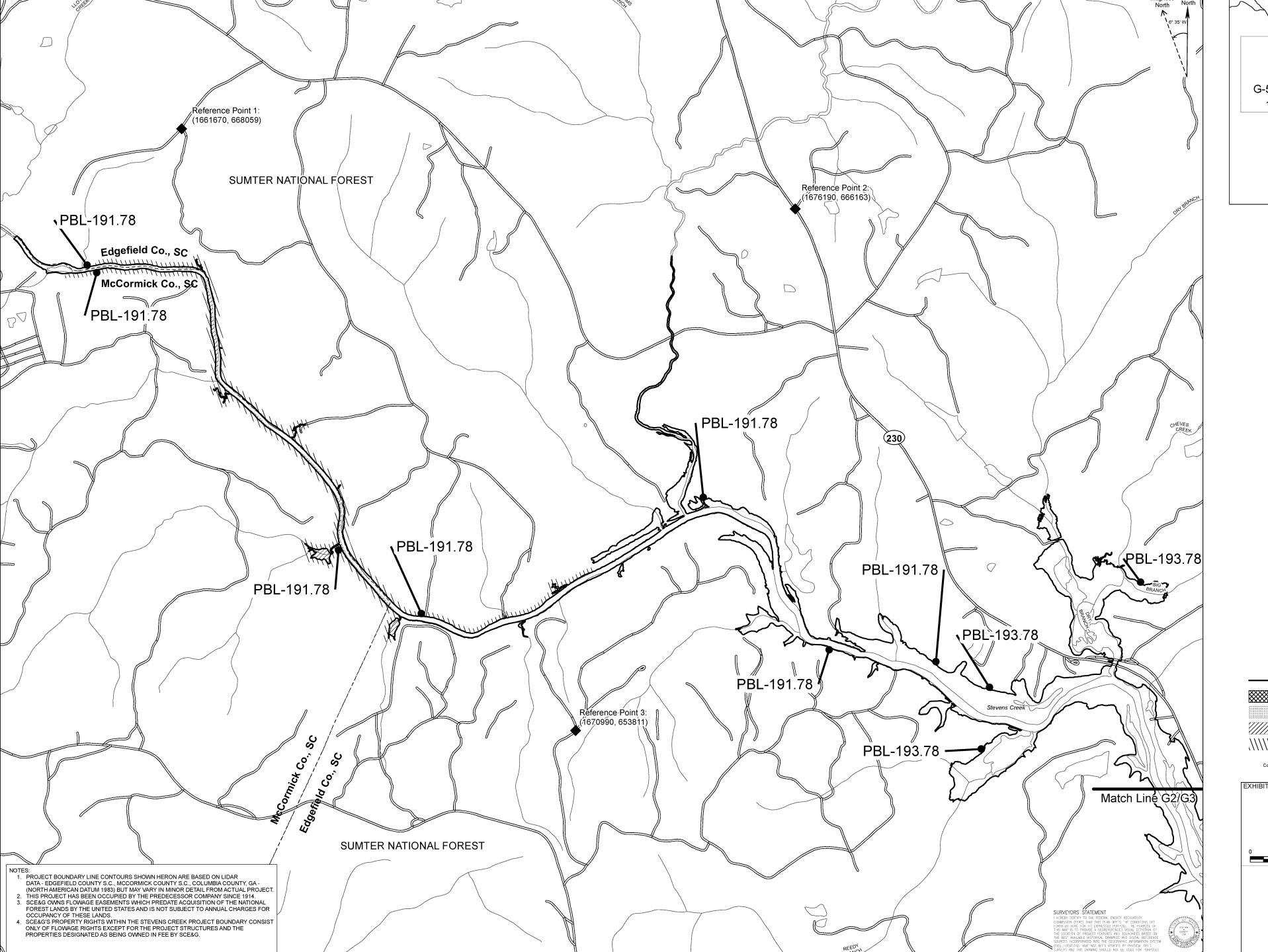
SURVEYORS STATEMENT
I, JERRY L. GIBSON, being duly sworn, depose and say that this plan meets the conditions set forth by 16 USC 430b (b) (3) (B) (i) (I) and (ii) and that the purposes of this map is to provide a georeferenced visual depiction of the location of project features and boundaries based on the best available historical drawings and digital reference sources incorporated into the geographic information system (GIS). LOCATIONS HAVE NOT BEEN VERIFIED BY PHYSICAL FIELD SURVEY AND THIS DRAWING SHOULD NOT BE USED FOR PURPOSES OF DEVELOPING PROPERTY BOUNDARY DESCRIPTIONS.



Metes and Bounds			Metes and Bounds			Metes and Bounds		
Point A			Point B			Point C		
1679462	630686		1680198	635251		1681310	636132	
Line	Bearing	Length	Line	Bearing	Length	Line	Bearing	Length
1	S89°49'40"E	56.06'	1	S69°18'W	127.60'	1	S69°55'24"E	66.51'
2	S38°14'2"E	29.18'	2	S19°27'0"E	48.42'	2	N64°43'44"E	110.40'
3	S65°46'14"W	134.26'	3	S53°26'19"W	10.41'	3	S72°35'27"E	277.79'
4	S40°24'0"E	88.16'	4	S27°23'37"E	12.89'	4	S64°31'14"E	256.72'
5	N53°44'42"E	190.86'	5	N65°26'20"E	8.44'	5	N15°47'E	24.05'
6	S36°52'12"E	20.83'	6	S32°39'20"E	10.74'	6	N64°16'31"W	262.48'
7	N52°29'26"E	410.58'	7	N64°51'13"E	123.65'	7	N72°10'23"W	331.18'
8	S38°32'28"E	157.15'				8	N45°45'53"W	17.8'
9	N52°54'1"E	115.30'						
10	N39°32'33"W	195.11'						
11	N52°41'8"W	2039.96'						



- NOTES:
1. PROJECT BOUNDARY LINE CONTOURS SHOWN HEREON ARE BASED ON LIDAR DATA - EDGEFIELD COUNTY S.C., MCCORMICK COUNTY S.C., COLUMBIA COUNTY, GA - (NORTH AMERICAN DATUM 1983) BUT MAY VARY IN MINOR DETAIL FROM ACTUAL PROJECT.
 2. THIS PROJECT HAS BEEN OCCUPIED BY THE PREDECESSOR COMPANY SINCE 1914.
 3. SCEAG OWNS FLOWAGE EASEMENTS WHICH PREDATE ACQUISITION OF THE NATIONAL FOREST LANDS BY THE UNITED STATES AND IS NOT SUBJECT TO ANNUAL CHARGES FOR OCCUPANCY OF THESE LANDS.
 4. SCEAG'S PROPERTY RIGHTS WITHIN THE STEVENS CREEK PROJECT BOUNDARY CONSIST ONLY OF FLOWAGE RIGHTS EXCEPT FOR THE PROJECT STRUCTURES AND THE PROPERTIES DESIGNATED AS BEING OWNED IN FEE BY SCEAG.



NOTES:

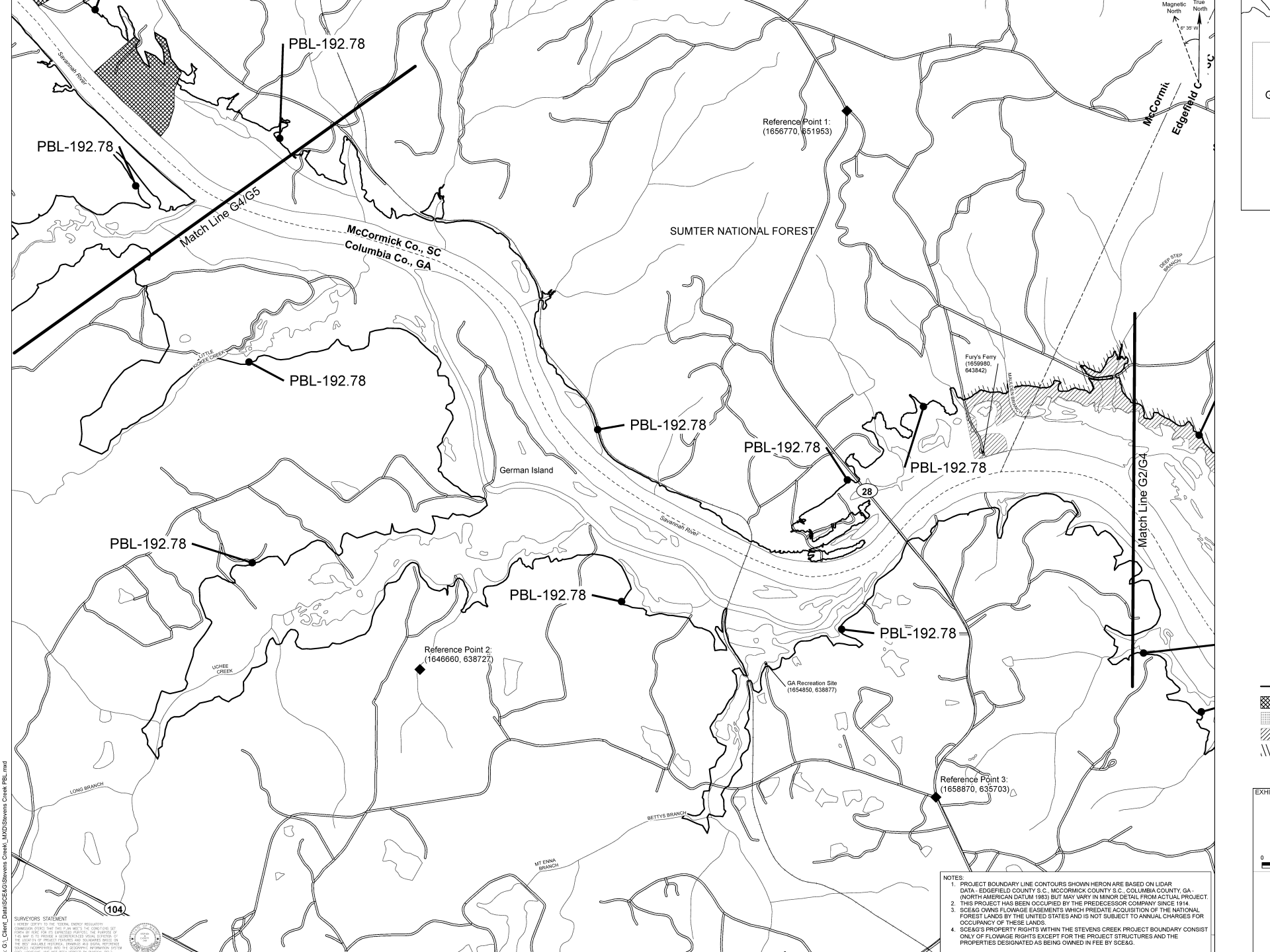
1. PROJECT BOUNDARY LINE CONTOURS SHOWN HEREON ARE BASED ON LIDAR DATA - EDGEFIELD COUNTY S.C., MCCORMICK COUNTY S.C., COLUMBIA COUNTY GA - (NORTH AMERICAN DATUM 1983) BUT MAY VARY IN MINOR DETAIL FROM ACTUAL PROJECT.
2. THIS PROJECT HAS BEEN OCCUPIED BY THE PREDECESSOR COMPANY SINCE 1914.
3. SCE&G OWNS FLOWAGE EASEMENTS WHICH PREDATE ACQUISITION OF THE NATIONAL FOREST LANDS BY THE UNITED STATES AND IS NOT SUBJECT TO ANNUAL CHARGES FOR OCCUPANCY OF THESE LANDS.
4. SCE&G'S PROPERTY RIGHTS WITHIN THE STEVENS CREEK PROJECT BOUNDARY CONSIST ONLY OF FLOWAGE RIGHTS EXCEPT FOR THE PROJECT STRUCTURES AND THE PROPERTIES DESIGNATED AS BEING OWNED IN FEE BY SCE&G.

SURVEYOR'S STATEMENT

I, JAMES L. LEE, being duly sworn, depose and say that the foregoing is a true and correct statement of the facts and circumstances as to the location of the project boundary and the location of the project structures and the properties designated as being owned in fee by SCE&G, as shown on the map hereon, and that I am a duly licensed Professional Engineer in the State of South Carolina, and that I am the only person who has been authorized to prepare this map.

WITNESSED my hand and the seal of my office this 1st day of March, 2023.

JAMES L. LEE, Professional Engineer, No. 12345, State of South Carolina



PBL-192.78

PBL-192.78

Match Line G4/G5

McCormick Co., SC
Columbia Co., GA

SUMTER NATIONAL FOREST

Reference Point 1:
(1656770, 651953)

Magnetic North
True North
0° 30' W

PBL-192.78

PBL-192.78

PBL-192.78

PBL-192.78

Match Line G2/G4

PBL-192.78

PBL-192.78

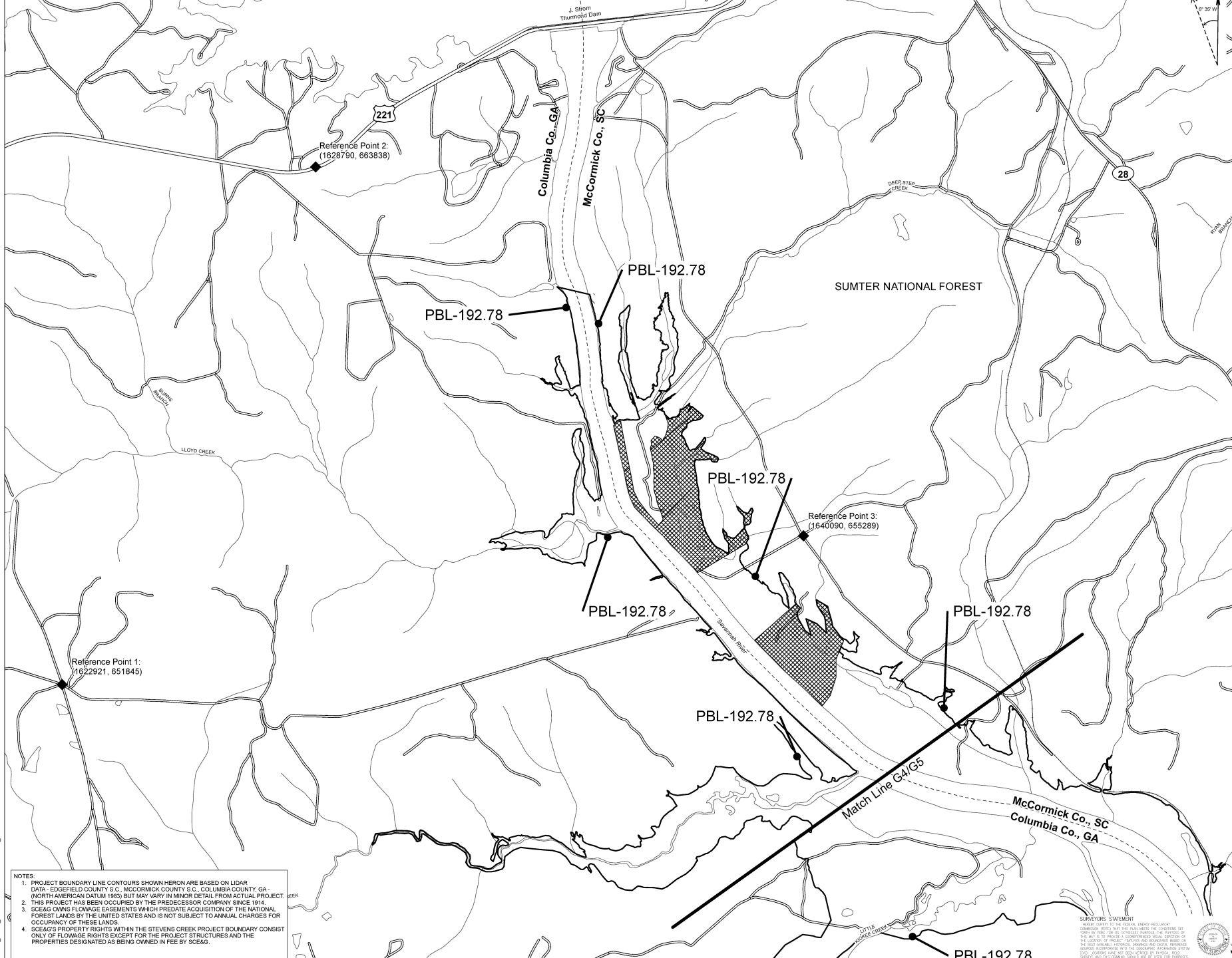
PBL-192.78

Reference Point 2:
(1646660, 638727)

GA Recreation Site
(1654850, 638677)

Reference Point 3:
(1658870, 635703)

- NOTES:
1. PROJECT BOUNDARY LINE CONTOURS SHOWN HEREON ARE BASED ON LIDAR DATA, EDGEFIELD COUNTY S.C., MCCORMICK COUNTY S.C., COLUMBIA COUNTY, GA. (NORTH AMERICAN DATUM 1983) BUT MAY VARY IN MINOR DETAIL FROM ACTUAL PROJECT.
 2. THIS PROJECT HAS BEEN OCCUPIED BY THE PREDECESSOR COMPANY SINCE 1914.
 3. SCE&G OWNS FLOWAGE EASEMENTS WHICH PREDATE ACQUISITION OF THE NATIONAL FOREST LANDS BY THE UNITED STATES AND IS NOT SUBJECT TO ANNUAL CHARGES FOR OCCUPANCY OF THESE LANDS.
 4. SCE&G'S PROPERTY RIGHTS WITHIN THE STEVENS CREEK PROJECT BOUNDARY CONSIST ONLY OF FLOWAGE RIGHTS EXCEPT FOR THE PROJECT STRUCTURES AND THE PROPERTIES DESIGNATED AS BEING OWNED IN FEE BY SCE&G.



NOTES:
1. PROJECT BOUNDARY LINE CONTOURS SHOWN HEREON ARE BASED ON LIDAR DATA - EDGEFIELD COUNTY S.C., MCCORMICK COUNTY S.C., COLUMBIA COUNTY, GA - NORTH AMERICAN DATUM 1983 BUT MAY VARY IN MINOR DETAIL FROM ACTUAL PROJECT.
2. THIS PROJECT HAS BEEN OCCUPIED BY THE PREDECESSOR COMPANY SINCE 1914.
3. SCE&G OWNS FLOWAGE EASEMENTS WHICH PREDATE ACQUISITION OF THE NATIONAL FOREST LANDS BY THE UNITED STATES AND IS NOT SUBJECT TO ANNUAL CHARGES FOR OCCUPANCY OF THESE LANDS.
4. SCE&G'S PROPERTY RIGHTS WITHIN THE STEVENS CREEK PROJECT BOUNDARY CONSIST ONLY OF FLOWAGE RIGHTS EXCEPT FOR THE PROJECT STRUCTURES AND THE PROPERTIES DESIGNATED AS BEING OWNED IN FEE BY SCE&G.

SURVEYORS STATEMENT
I, JAMES W. HARRIS, LICENSED SURVEYOR, REG. NO. 10000, HAVE BEEN EMPLOYED BY THE SURVEYOR GENERAL OF THE STATE OF SOUTH CAROLINA TO SURVEY THE PROJECT BOUNDARY AND TO PREPARE THIS MAP. I HAVE BEEN ADVISED BY THE CLIENT THAT THE PROJECT BOUNDARY IS THE SAME AS THE BOUNDARY SHOWN ON THE MAP OF THE PROJECT BOUNDARY, DATED 1914, AND THAT THE PROJECT BOUNDARY IS THE SAME AS THE BOUNDARY SHOWN ON THE MAP OF THE PROJECT BOUNDARY, DATED 1914, AND THAT THE PROJECT BOUNDARY IS THE SAME AS THE BOUNDARY SHOWN ON THE MAP OF THE PROJECT BOUNDARY, DATED 1914.



Operations

The current license states:

- Reregulate releases from Thurmond Dam
- Minimize pool fluctuations
- Maintain reservoir between 183.0 and 187.5 NGVD

Operating Plan developed to:

- Identify minimum flow
- Procedures for conditions when minimum flow may not be provided

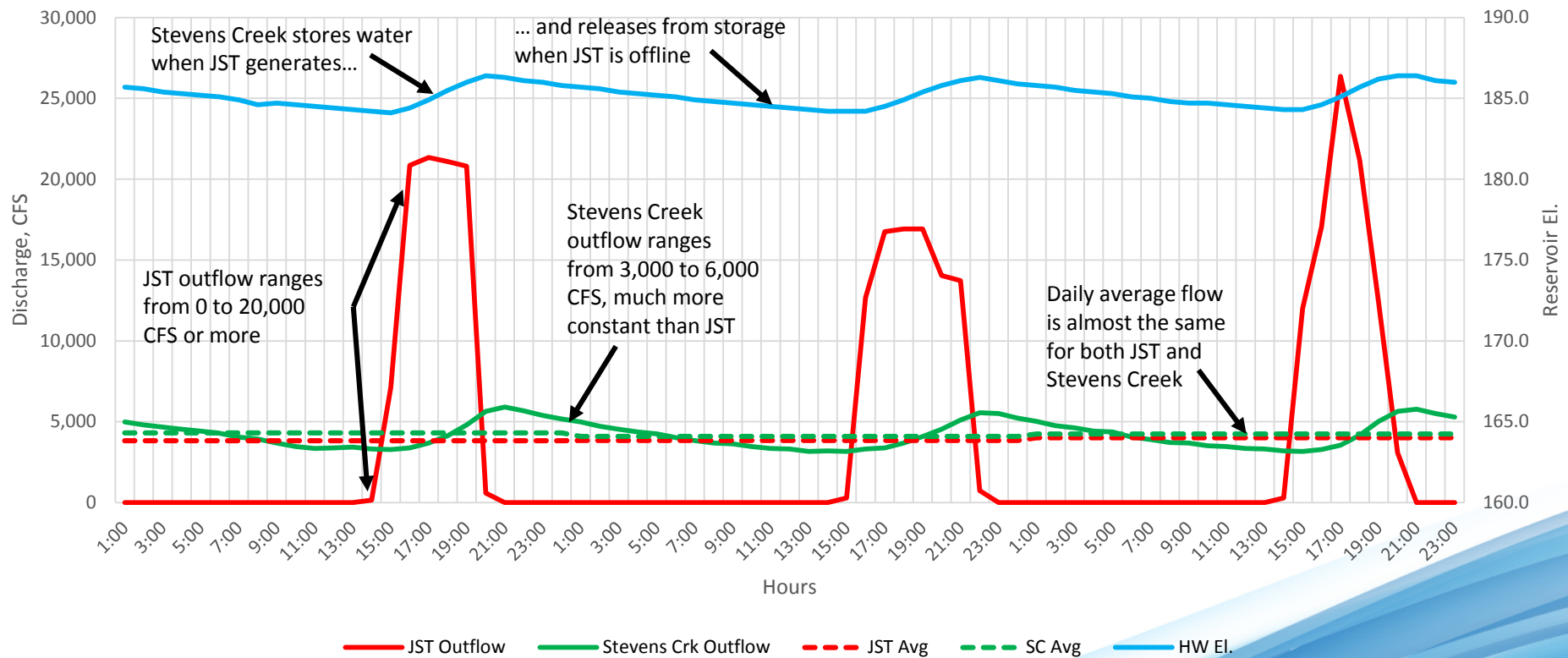
Operations

- Gross storage capacity, ~23,600 acre-feet
- Usable storage at full pool, ~7,800 acre-feet with 4.5 foot drawdown
- Re-regulate river flows below 8,300 cfs
- 8 vertical turbine generators



What does “reregulation” mean?

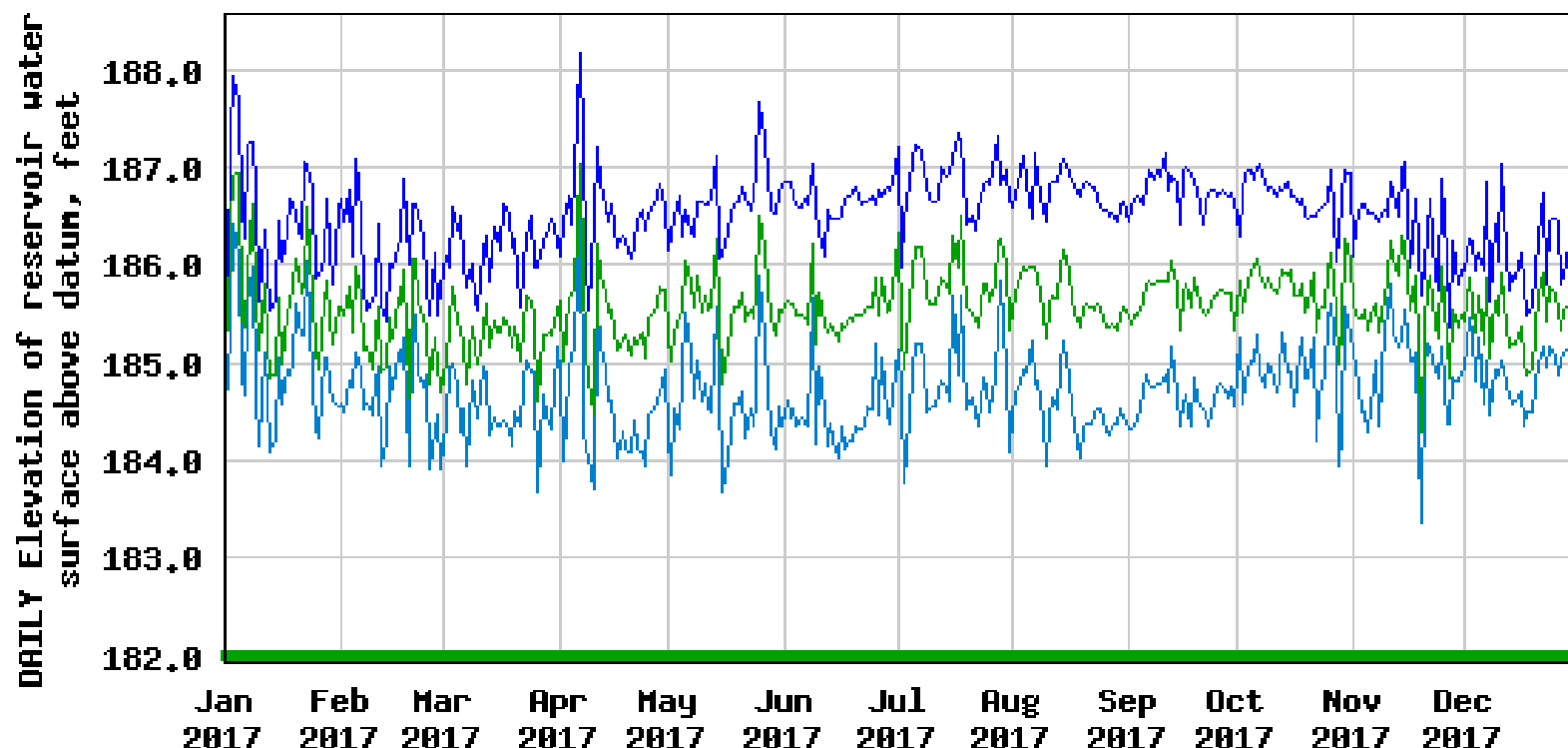
3 Day Re-regulation Example



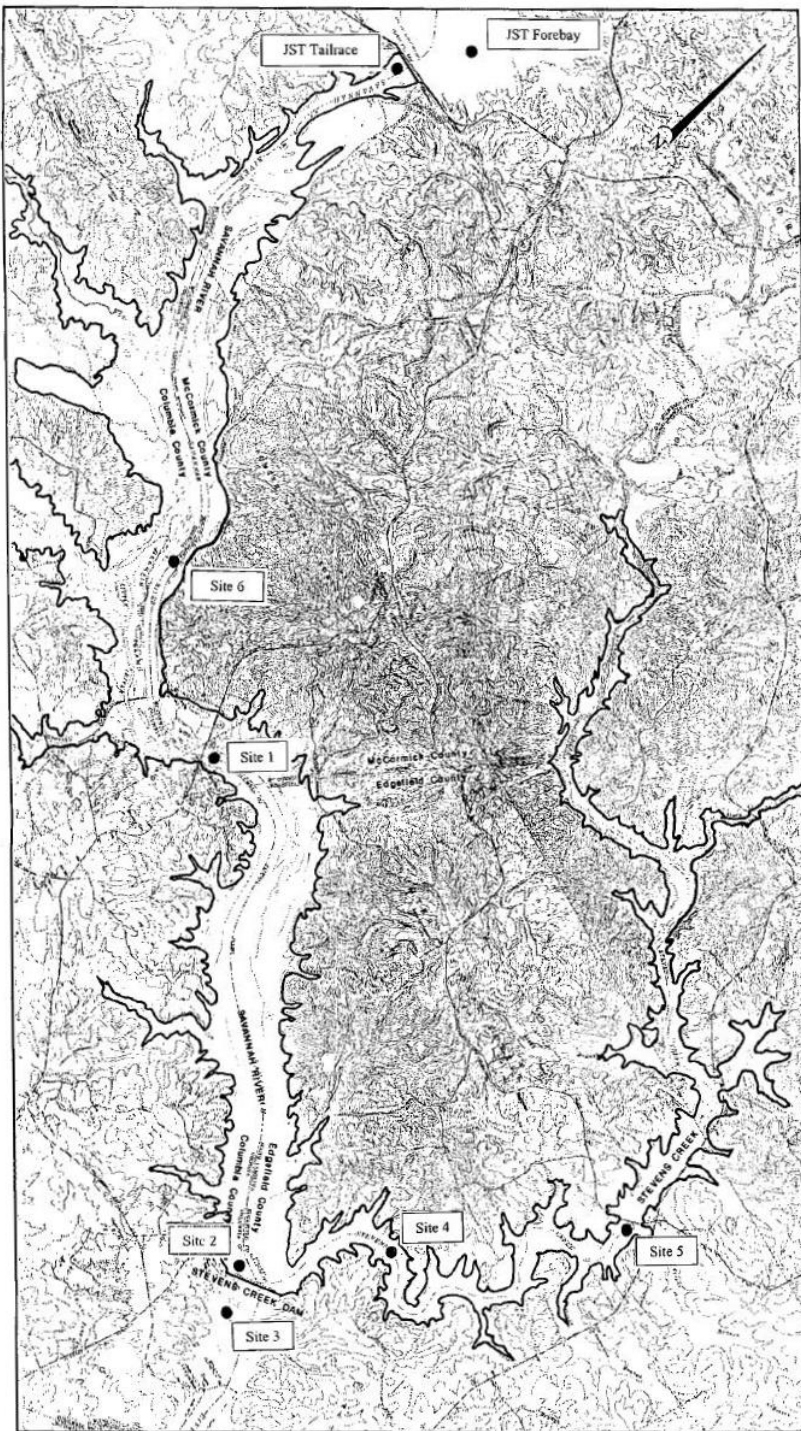
Stevens Creek reservoir



USGS 02196483 SAVANNAH RVR AT STEVENS CREEK DAM NR MORGANA, SC



- Daily maximum elevation of reservoir water surface above datum
- Daily minimum elevation of reservoir water surface above datum
- Daily mean elevation of reservoir water surface above datum
- Period of approved data



Water Quality

Schedule:

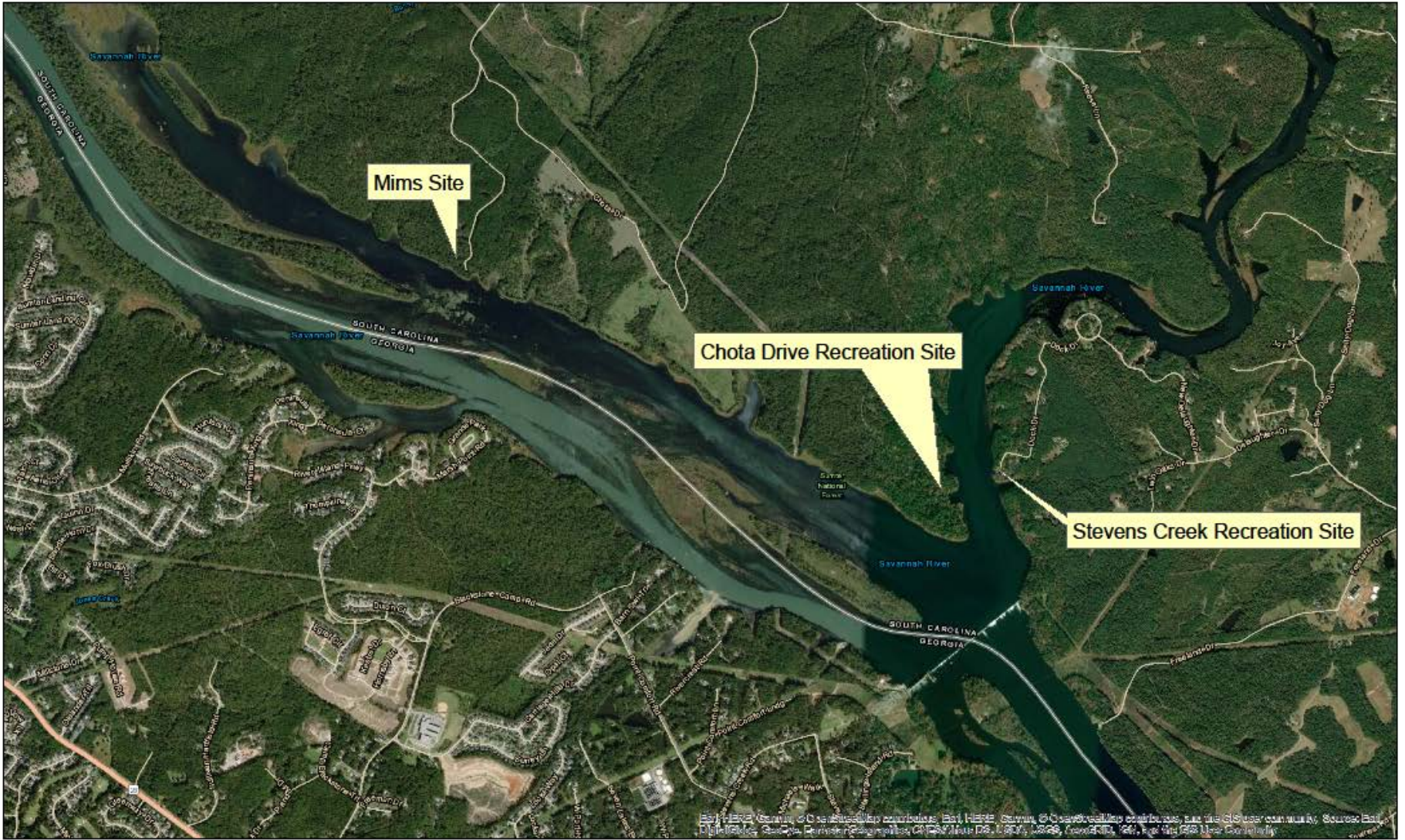
Once a month on 2 consecutive days, once daily for Nov – May;

Twice a month on 2 consecutive days, twice daily for June - Oct

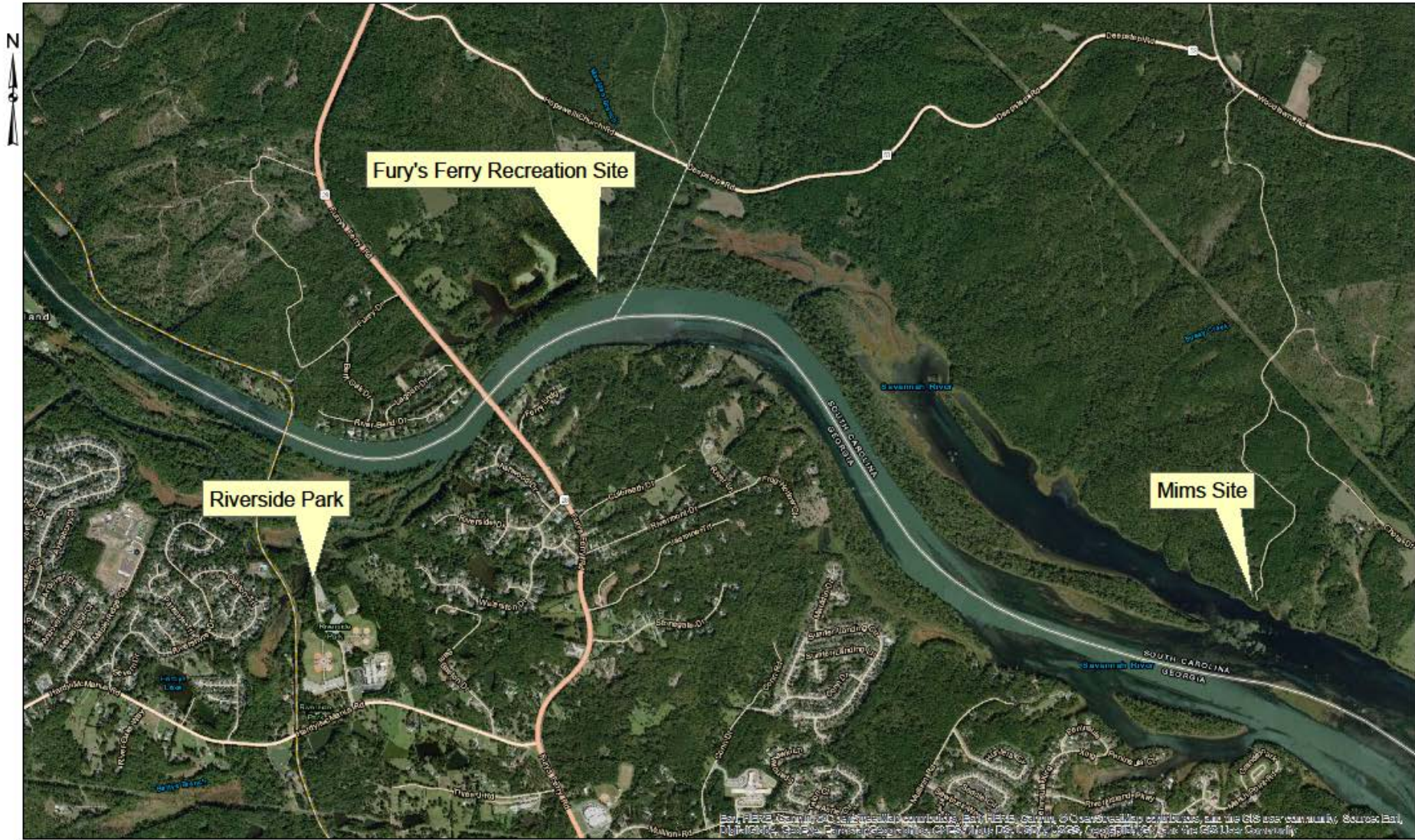
Recreation

- Stevens Creek Site – parking area, boat ramp, picnic tables, restroom
- Chota Drive Site – parking area, paths with bank fishing access, canoe launch area
- Mims Site – currently undeveloped (not supported by USFS Recreation Plan of the Long Cane Ranger District or the Forest Service Sustainable Recreation Strategy)
- Fury's Ferry Site – parking area, boat ramp, picnic tables, primitive camping area
- Riverside Park – on Betty's Branch, parking area fishing pier, boat ramp and dock

Stevens Creek Recreation Sites - Map 1

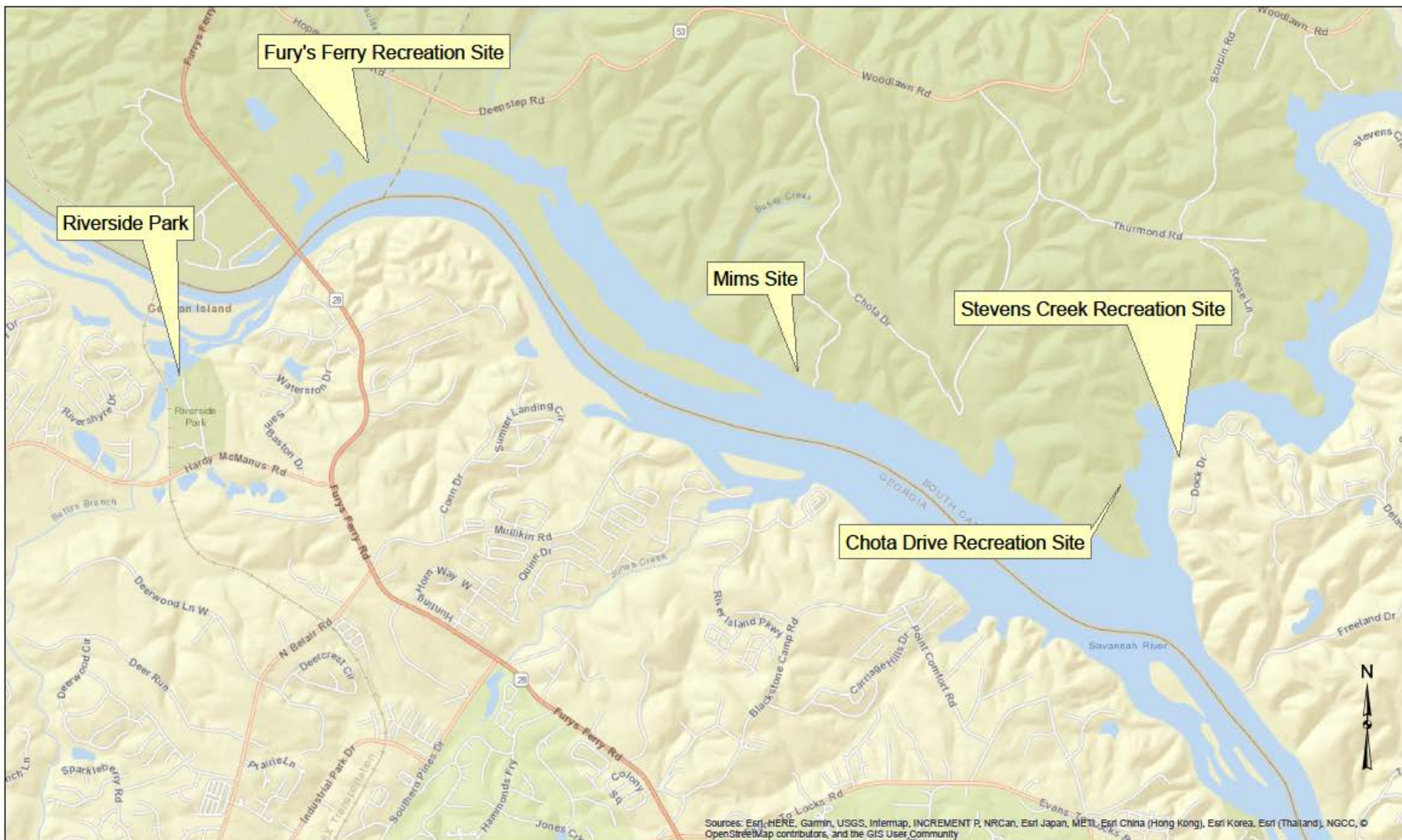


Stevens Creek Recreation Sites - Map 2



0 0.25 0.5 1 1.5 2 Miles

Stevens Creek Recreation Sites



Shoreline management

- US Army Corps of Engineers permits docks and shoreline maintenance between Thurmond dam and Stevens Creek dam.



Relicensing Process and Milestones

- ▶ Existing FERC license issued in 1995; expires 10/31/2025
- ▶ Required to start relicensing at least 5 years before existing license expires.
- ▶ Complete an enhanced Traditional Licensing Process (TLP) that encourages cooperative resolution of the issues.
- ▶ Develop a Comprehensive Relicensing Settlement Agreement

Big Picture – Relicensing Timeline

- ▶ May-October 2020 – File NOI and PAD with FERC, request approval of TLP
- ▶ Between 30 to 60 days after FERC approval of TLP – hold Joint Agency Meeting
- ▶ Late 2020-2021 – First Year Studies
- ▶ 2022 – Second Year Studies (if necessary)
- ▶ November 2022 – Issue DLA
- ▶ October 2023 – File FLA and Settlement Agreement with FERC

Agency and Stakeholder List

Federal/Tribal: NMFS, USACE, USFWS, USFS, Cherokee Nation

NGO: American Whitewater, Savannah Riverkeeper, Ducks Unlimited

South Carolina

- ▶ SC Dept. of Health and Environmental Control
- ▶ SC DNR
- ▶ Edgefield County Water & Sewer Auth.
- ▶ Edgefield Planning Commission
- ▶ SC Dept. Of Archives and History
- ▶ SC Parks, Rec, Tourism

Georgia

- ▶ Georgia DNR – Environmental Protection Division (401)
- ▶ Georgia DNR
- ▶ City of Augusta
- ▶ Georgia Forestry Commission
- ▶ Georgia Geologic Survey
- ▶ Georgia Historic Preservation Division

Environmental Resource Areas

- ▶ Soils and Geology
- ▶ Water Quality and Quantity
- ▶ Fish and Aquatic Resources
- ▶ Terrestrial Resources and Wetlands
- ▶ Rare, Threatened and Endangered Species
- ▶ Land Use, Aesthetics, and Socioeconomic Resources
- ▶ Recreation Resources
- ▶ Cultural/Tribal

Soils and Geology

- ▶ Existing Available Information
 - ▶ Soil surveys
 - ▶ FERC Environmental Inspections
 - ▶ SCE&G Erosion Surveys
- ▶ Other Available Information/Resource Discussion Points ?

Water Quality and Quantity

- ▶ Existing Available Information
 - ▶ USACE Survey Reports, Water Control Manual, Savannah River Drought Management Plan
 - ▶ Phinizy Center Basin Reports
 - ▶ DO and Temp Monitoring by SCE&G
 - ▶ GDNR 401 Reports
- ▶ Other Available Information/Resource Discussion Points ?

Fish and Aquatic Resources

► Existing Available Information

- SCDNR and GDNR habitat plans for Atlantic and shortnose sturgeon, shad and river herring
- Georgia Bass Club creel data
- Sunfish stocking evaluations at Stevens Creek impoundment
- Previous entrainment studies at Project
- Freshwater mussel surveys contracted by USFWS
- SNSA macro sampling data
- Fishery resource reports prepared for other relicensings (ADD, King Mill, Sibley Mill)
- Diadromous Fish Restoration Plan for Middle Savannah River (NMFS and USFWS)
- 2016-2018 Report of Robust Redhorse Conservation Committee
- ASMFC's Atlantic Sturgeon Stock Assessment Report
- SCDNR Fisheries Study in Stevens Creek Reservoir – final report due spring 2019

► Other Available Information/Resource Discussion Points ?

Terrestrial and Wetland Resources

- ▶ Existing Available Information
 - ▶ USFWS National Wetlands Inventory data
 - ▶ USFS Forest Plan EIS
 - ▶ General species info available from SC/GA DNRs
- ▶ Other Available Information/Resource Discussion Points ?

RT&E Resources

- ▶ Existing Available Information
 - ▶ USFWS IPAC Data
 - ▶ USFS Forest Plan EIS
 - ▶ General species info available from SC/GA DNRs
- ▶ Other Available Information/Resource Discussion Points ?

Land Use, Aesthetics, & Socioeconomic Resources

- ▶ Existing Available Information
 - ▶ USFS Forest Plan EIS
 - ▶ SCORPs
 - ▶ County data
 - ▶ GIS data and aerial photography
- ▶ Other Available Information/Resource Discussion Points ?

Recreation Resources

- ▶ Existing Available Information
 - ▶ Existing Form 80 data
 - ▶ USFS data
 - ▶ Columbia County use data
- ▶ Other Available Information/Resource Discussion Points ?

Cultural/Tribal Resources

- ▶ Existing Available Information
 - ▶ Extensive survey performed at the Project in 1990's
 - ▶ Existing Programmatic Agreement and HPMP
 - ▶ Annual monitoring of known sites
- ▶ Other Available Information/Resource Discussion Points ?

Resource Conservation Groups

- ▶ Fish, Wildlife and Water Quality
- ▶ Lake, Land and Recreation Management
- ▶ Project Operations

*Cultural resources will be evaluated under consultation guidelines as defined by Section 106 of the Historic Preservation Act

Summary of Concerns Noted at November Public Meeting

- ▶ Vegetation management
 - ▶ Potential scheduled drawdown below el. 183'
- ▶ Sedimentation
- ▶ USACE operations
- ▶ Stevens Creek Recreation Site improvements
- ▶ Communications regarding reservoir operations
- ▶ Noise from trash rake operation

Summary of Issues Identified on PAD Questionnaire

Resource Area	Issue
RTE Species	Carolina Heelsplitter (Endangered) – occurs within the Steven's Creek watershed
RTE Species	Brook Floater(ARS) – occurs in medium tributary in Steven's Creek
RTE Species	Relict Trillium (Endangered) – can occur on bluffs near large rivers
Water Resources	Low Flow requirements at Thurmond Dam
Fish & Aquatic	Sedimentation, Water elevation fluctuations, Vegetation, Water Quality (DO in Stevens Creek)
Fish & Aquatic	Robust redhorse, sturgeon, shad, striped bass, native mollusks – spawning migrations, pulsing effects including quantity and timing, water quality, habitat quality, fish passage
Recreation	Portage options

www.stevenscreekrelicense.com



[Home](#) [Contact Us](#) [Process Overview](#) [Project Overview](#) [RCGs and TWCs](#)

[Relicensing Events Calendar](#)

Welcome to the Stevens Creek Relicensing Website

South Carolina Electric & Gas Company (SCE&G) has started their multi-year relicensing process for the Stevens Creek Hydroelectric Project (Project). This is a federally mandated process that is governed by the Federal Energy Regulatory Commission (FERC) and has the ultimate goal of obtaining a new operating license for the Project. This new license will dictate Project operations and associated Project resource management for the next 40 to 50 years.

FERC requires SCE&G to collaborate and consult with stakeholders, including federal



PROJECT UPDATES

October 11, 2018 – Stevens Creek
Public Outreach Meetings: 2:00
p.m. & 6:00 p.m., Savannah
Rapids Pavilion





Google Earth